

## Clark County, IN

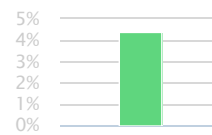
Community Profile

**TOTAL  
POPULATION**  
**115,116**

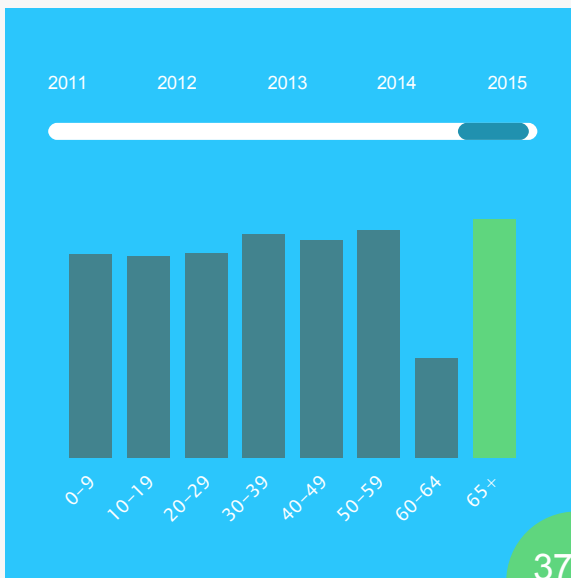
The total population of the County of Clark County is 115,116. The median age is 37.88.



The population in Clark County has grown 4.43% since 2011.



### Age Distribution



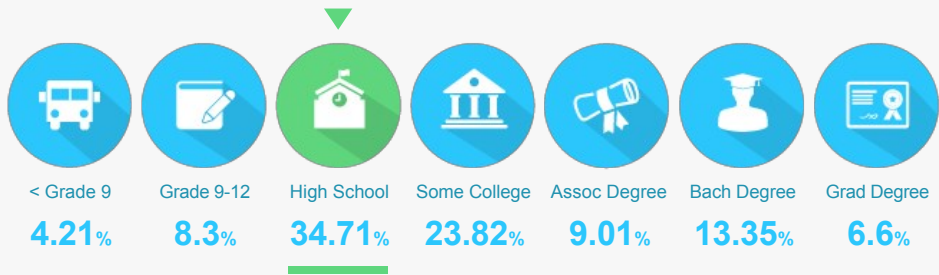
49.09%  
Male

50.91%  
Female

**37.88**  
Median Age

# EDUCATIONAL ATTAINMENT

The majority of the population in Clark County has completed at least a high school degree.



**28.96%**  
of the population  
has a college degree.



offer Associate's Degree  
or Certificate



offer Bachelor's Degree  
or Higher

# LABOR FORCE

# 59,997

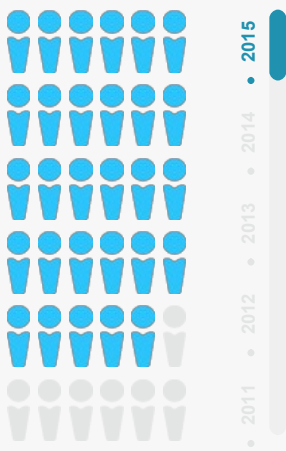
Clark County has a labor force of 59,997 people, with a job growth rate of 0.01% since 2014, and an unemployment rate of 4%.

## JOB GROWTH

# 0.01%

Since 2014

## TOTAL EMPLOYEES



50,982  
2015

The work distribution of total employees in Clark County is.



## 5 TOP TALENT

Where are the top jobs by occupation?



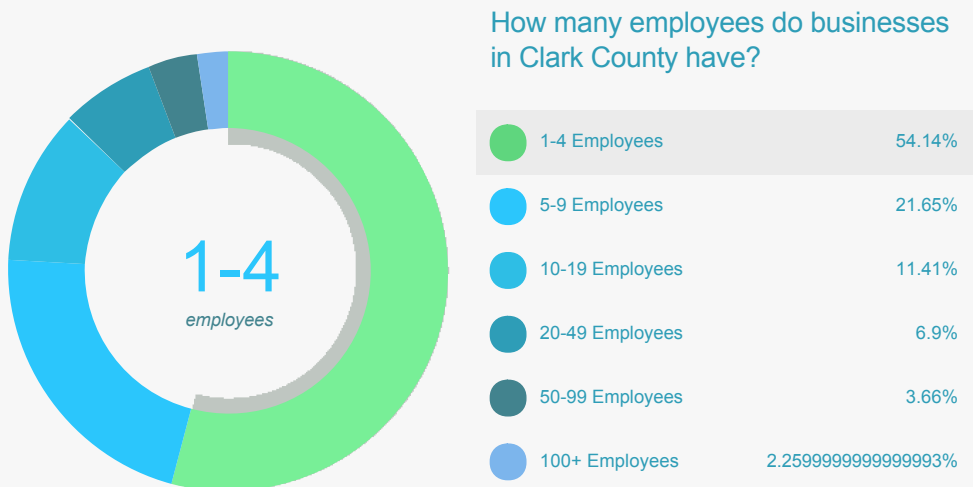
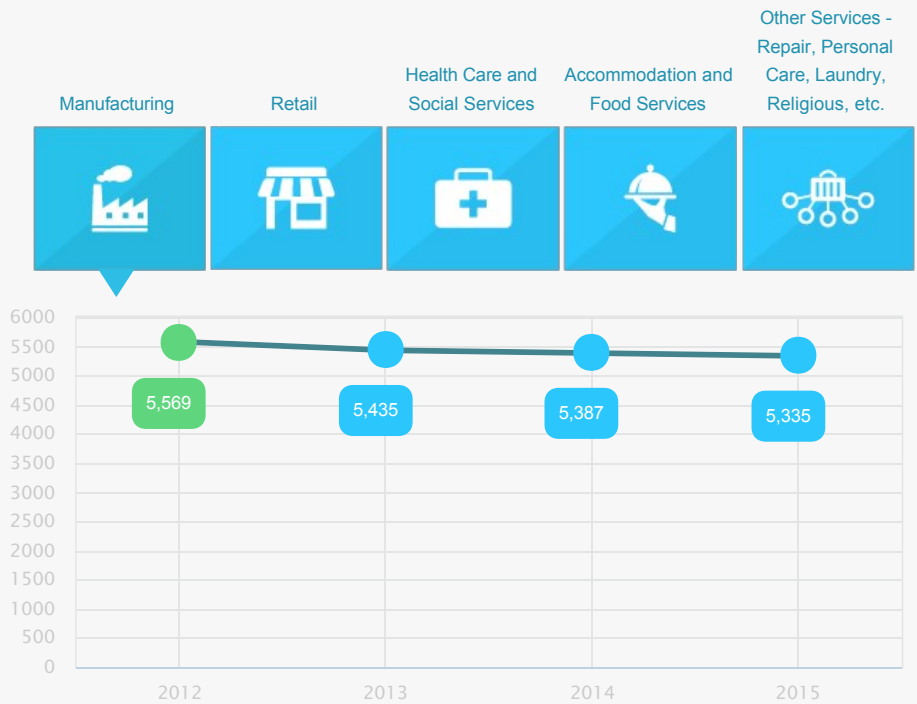
# TOTAL ESTABLISHMENTS

# 3,857

# BUSINESSES AND JOBS

Clark County has a total of 3,857 businesses. In 2015, the leading industries were: Manufacturing, Retail, Health Care and Social Services, Accommodation and Food Services, and Other Services - Repair, Personal Care, Laundry, Religious, etc.


Which are the top 5 industries by jobs?



# INCOME AND SPENDING

Workers in Clark County earn a median yearly household income of \$51,103. 40.85% of the households earn more than the national average each year. Household expenditures average \$50,415 per year. The majority of earnings get spent on Shelter, Transportation, Food and Beverages, Health Care, and Utilities.

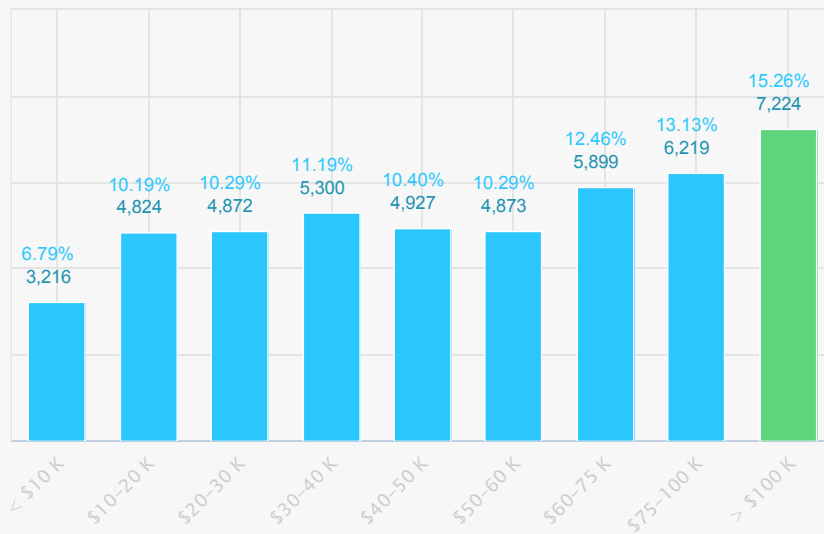
There are 131% more households who own their homes than there are renters.



MEDIAN  
**HOUSEHOLD  
INCOME**  
**\$51,103**

4% more than the state  
7% less than the nation

Income Distribution



## How do people spend much of their money?

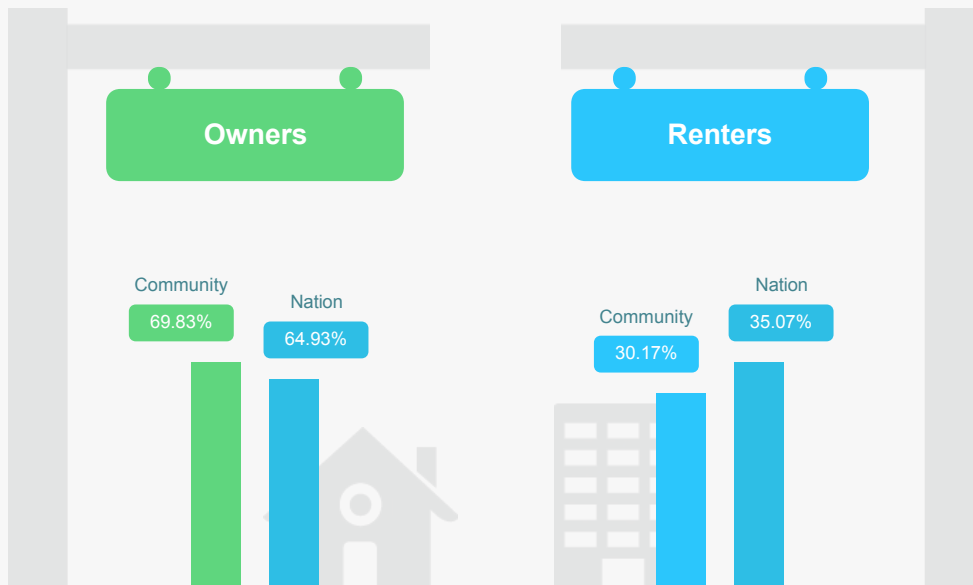
\$ PER HOUSEHOLD



The average household expenditure in Clark County is:

# \$50,415

## HOUSING



# TRANSPORTATION

Residents spend an average of 23 minutes commuting to work. Clark County is served by 21 airports within 50 miles. Rail can be accessed within the community. Interstates can be accessed within the community.



